

MOVIN**COOL**®

*SPARE PARTS CATALOGUE*



**15SF**

# Table of Contents

No.	UNIT PART NUMBER	PRODUCTION PERIOD	REFRI- GERANT	SECTION	ISSUE DATE (mm/'yy)
1	484000-4480	FROM December 2013 (1213) TO Present	R410A	Page 3 ~ 13 SP0079-00	02/'14
2	484000-3770	FROM August 2007 (0807) TO October 2013 (1013)	R407C	Page 15 ~ 31 SP0059-03	02/'14
3	484000-0412	FROM September 2005 (0905) TO June 2007 (0607) Serial No: 09G0012 ~ 06J0020	R22	Page 33 ~ 47 SP0058-03	02/'14

© 2014 DENSO AUTOMOTIVE SYSTEMS AUSTRALIA PTY, LTD.

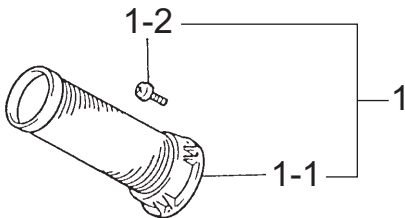
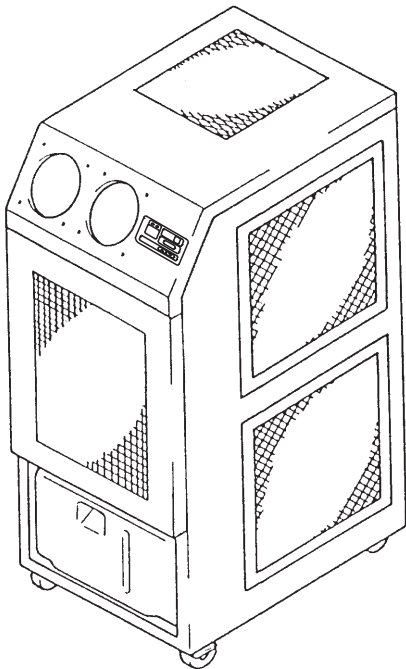
All rights reserved. This book may not be reproduced or copied, in whole or in part, without the written permission of the publisher. DENSO AUTOMOTIVE SYSTEMS AUSTRALIA PTY, LTD. reserves the right to make changes without prior notice. MovinCool® is a registered trademark of DENSO Corporation.

# 15SF

Unit Part No: 484000-4480

Production Period: From December 2013 (1213)  
To Present

15SF



Production Period from December 2013 (1213) to Present

**15SF**

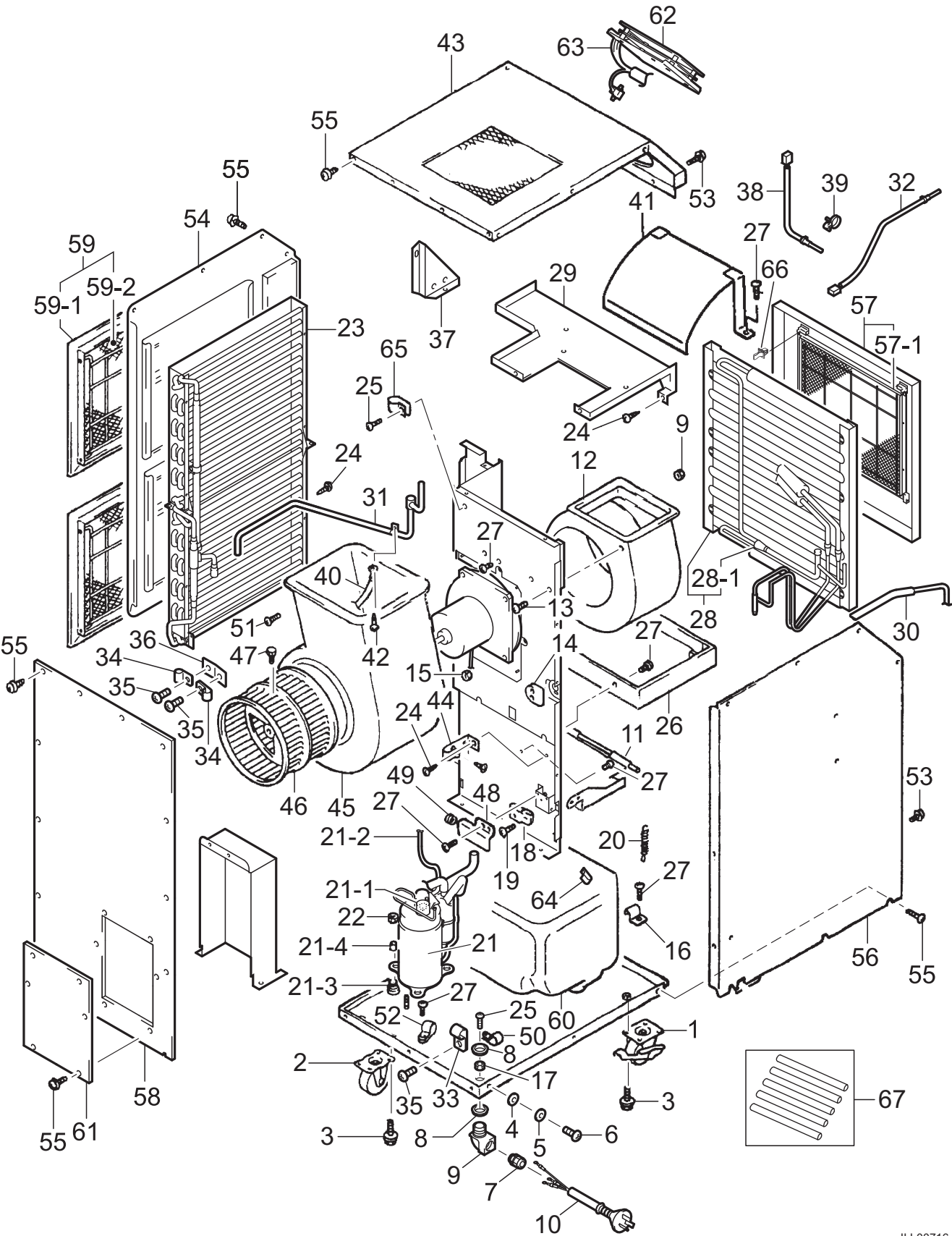
ILL. NO.	DESCRIPTION	PART NO.	QTY.	PRODUC- TION PERIOD (mm/yy)	REMARKS
1	Nozzle Kit	484209-0190	2		w/ILL.1-1~1-2
1-1	Duct Assy	484350-0311	2		
1-2	Screw, w/Washer	91370-06161	8		M6, L16

**15SF**



ILL. NO.	DESCRIPTION	PART NO.	QTY.	PRODUCTION PERIOD (mm/yy)	REMARKS
	Unit Assy				
1	Roller	484702-0241	2		w/Lock
2	Roller	484702-0250	2		No Lock
3	Bolt, w/Washer	91510-08141	8		M8, L14
4	Washer, Toothed	949016-0120	1		ID6.4
5	Washer, Plate	90201-06400	1		For Ground
6	Screw	90051-06120	1		M6, L12, For Ground
7	Grommet	484926-0720	1		
8	Nut, Holder	484919-0110	2		
9	Grommet	484926-0710	1		
10	Wire Assy	481950-0280	1		Power Cord
11	Frame Sub-Assy	484310-5331	1		
12	Casing	484261-0010	1		
13	Screw, w/Washer	91370-06161	4		M6, L16
14	Grommet	484926-0120	1		
15	Nut	949056-1430	13		M6
16	Holder	484927-0970	1		For Drain Tank Stay
17	Nut	949056-1501	7		M4
18	Switch	484502-0520	1		(DS)
19	Screw, w/Washer	91310-03161	2		M3, L16
20	Spring, Tension Coil	949171-2090	2		
21	Compressor Assy	484650-3310	1		w/ILL.21-1~21-4
21-1	Relay, Overload	484501-0510	1		
21-2	Wire Assy	481950-0382	1		
21-3	Cushion	484904-0380	3		
21-4	Collar	484915-0410	3		ID10.2
22	Nut	949056-2500	3		M8
23	Core Assy	484600-2400	1		
24	Screw, Tapping	949001-1570	3		D4, L10
25	Screw	949006-6140	3		M4, L16
26	Pan Assy, Drain	484430-0120	1		
27	Screw	949006-5850	16		M4, L10
28	Core Assy	484600-2410	1		w/ILL.28-1
28-1	Pipe Assy	484800-4700	1		Capillary
29	Stay Sub-Assy	484340-3650	1		
30	Pipe Assy	484800-5550	1		
31	Pipe Assy	484800-4750	1		
32	Thermistor Assy	482780-1540	1		Anti Freeze
33	Clamp	040033-3400	1		
34	Clamp	040033-3420	2		
35	Screw	921000-5108	3		M5, L10
36	Bracket	484321-4450	1		
37	Bracket Sub-Assy	484320-0660	1		

15SF

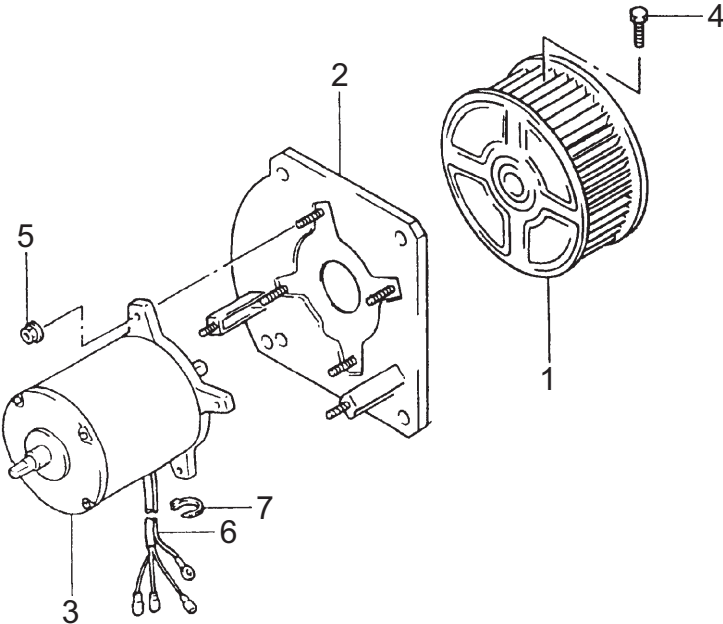


ILL00716-00



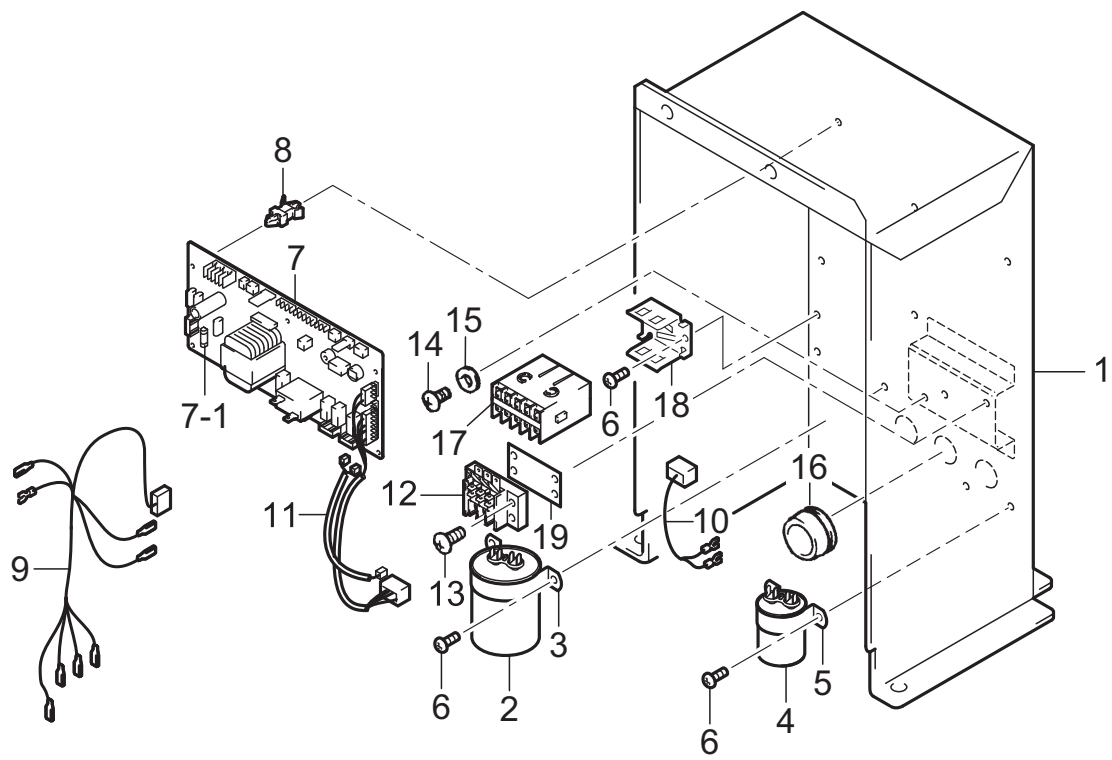
ILL. NO.	DESCRIPTION	PART NO.	QTY.	PRODUC- TION PERIOD (mm/yy)	REMARKS
38	Thermistor Assy	482780-1550	1		Room
39	Clip, Nonmetallic	482852-0930	1		
40	Wire Assy	484930-0911	1		For Ground
41	Stay Sub-Assy	484340-0920	1		
42	Screw	91051-04100	1		M4, L10, Ground
43	Panel Assy	484490-0170	1		
44	Holder	484927-0151	1		
45	Casing	484261-0070	1		
46	Fan	484221-0350	1		
47	Bolt, Hexagon	949040-6150	1		M8, L18.5
48	Cover	484391-2421	1		
49	Grommet	484926-0290	1		
50	Clamp	481902-0030	1		
51	Screw, w/Washer	949007-3600	2		M4, L14
52	Clip, Cord	949350-3030	1		D15.2
53	Screw, Tapping, w/Washer	949008-0850	4		M4, L10
54	Panel Assy	484490-0180	1		
55	Bolt	480919-0370	48		M4, L10
56	Panel Assy	484490-0190	1		
57	Panel Assy	484490-0200	1		w/ILL.57-1
57-1	Filter	484401-0661	1		
58	Panel	484411-6870	1		
59	Filter Assy	484400-0190	2		w/ILL.59-1~59-2
59-1	Frame Assy	484300-0260	1		
59-2	Filter	484401-0661	1		
60	Tank	484731-0091	1		
61	Panel Sub-Assy	484470-5030	1		
62	Switch Assy	484560-2410	1		(CB)
63	Wire Assy	484930-9881	1		
64	Clamp	473459-0370	1		
65	Clip, Cord	949350-3090	3		D16
66	Knob	484923-0070	2		
67	Pipe Assy	484800-0440	1		For Charging

15SF



ILL. NO.	DESCRIPTION	PART NO.	QTY.	PRODUC- TION PERIOD (mm/yy)	REMARKS
	Blower Assy				
1	Fan	484221-0112	1		
2	Stay Assy	484330-0341	1		
3	Motor	484211-1321	1		
4	Bolt, Hexagon	949040-6150	1		M8, L18.5
5	Nut, Flange	92150-06061	4		M6
6	Wire Assy	484930-0901	1		
7	Clip	480841-0010	2		L100

15SF



ILL. NO.	DESCRIPTION	PART NO.	QTY.	PRODUC- TION PERIOD (mm/yy)	REMARKS
	Controller Assy				
1	Box Sub-Assy	484520-1410	1		
2	Capacitor, Compressor	484507-2180	1		35μF, 400VAC
3	Holder	484927-1340	1		
4	Capacitor, Fan	484507-2160	1		10μF, 400VAC
5	Holder	484321-4330	1		
6	Screw	949006-3250	6		M4, L10
7	Controller Assy	484500-4420	1		(RB), w/ILL.7-1
7-1	Fuse	481936-0140	1		5A, 250V, 5 Pieces Per Package
8	Support	482125-3170	6		
9	Wire Assy	484930-9903	1		
10	Wire Assy	484930-9911	1		
11	Wire Assy	484930-9962	1		(RB) ~ (DS, CB)
12	Terminal	484503-0430	1		For Signal
13	Screw	949006-3280	2		M4, L18
14	Screw	91051-04100	2		M4, L10
15	Washer, Plate	90201-04300	2		T0.8
16	Grommet	949321-3010	3		
17	Relay	484531-0990	1		
18	Holder	484927-1290	1		
19	Plate	484311-1650	1		

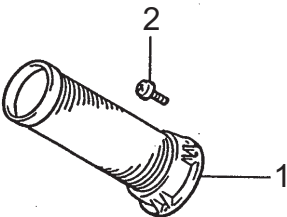
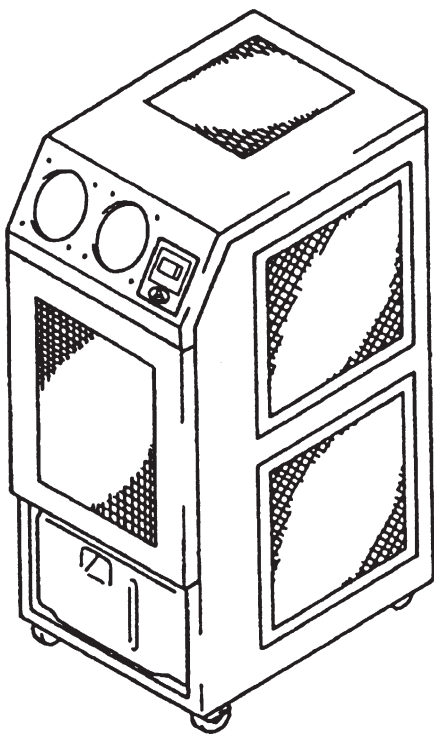
[ Memo ]

# 15SF

Unit Part No: 484000-3770

Production Period: From August 2007 (0807)  
To October 2013 (1013)

15SF



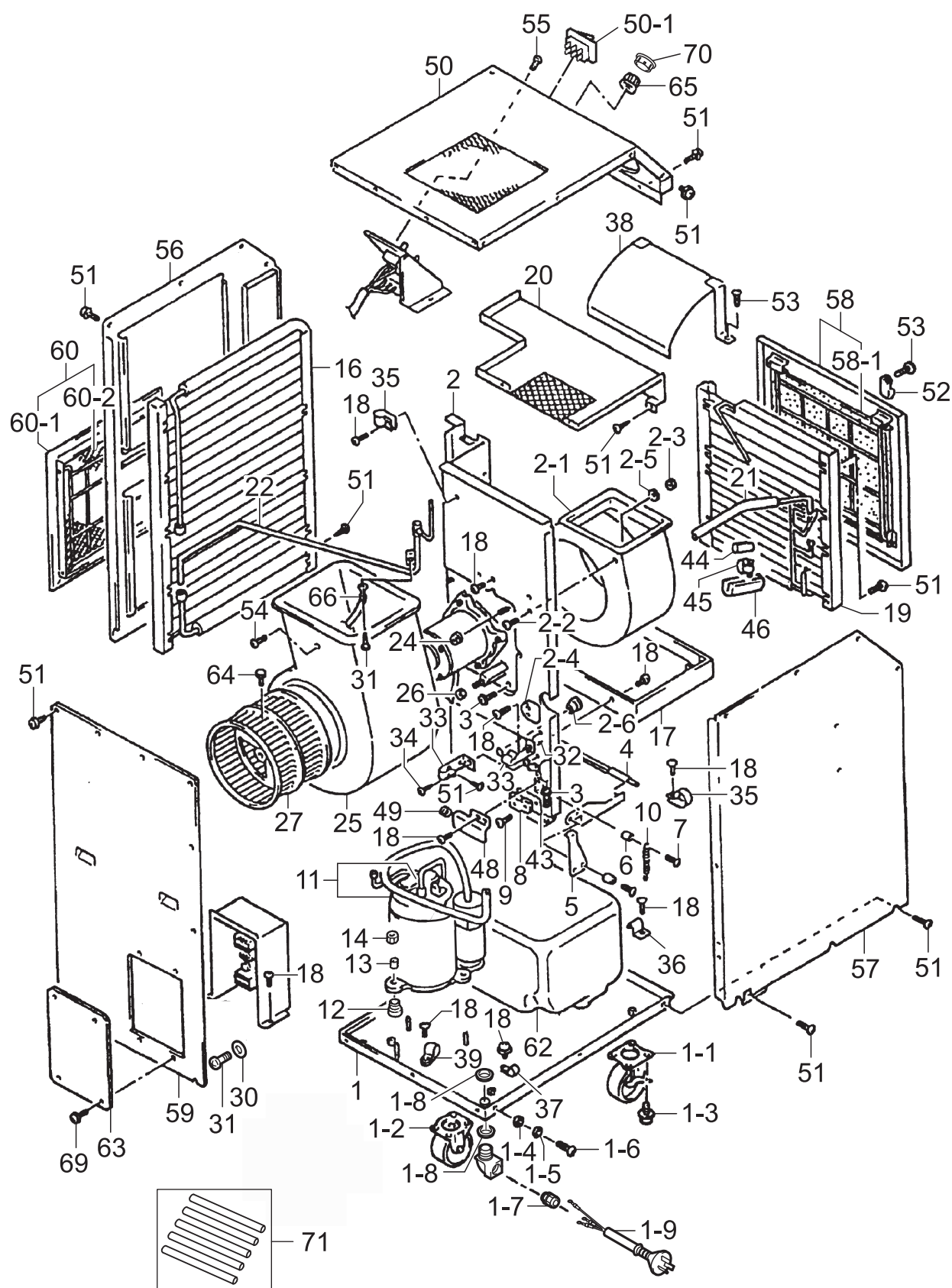


Production Period from August 2007 (0807) to October 2013 (1013)

**15SF**

ILL. NO.	DESCRIPTION	PART NO.	QTY.	PRODUC- TION PERIOD (mm/yy)	REMARKS
	Airconditioner Assy				
1	Duct Assy	484350-0311	2		
2	Screw, w/Washer	91370-06161	8		M6, L16

15SF



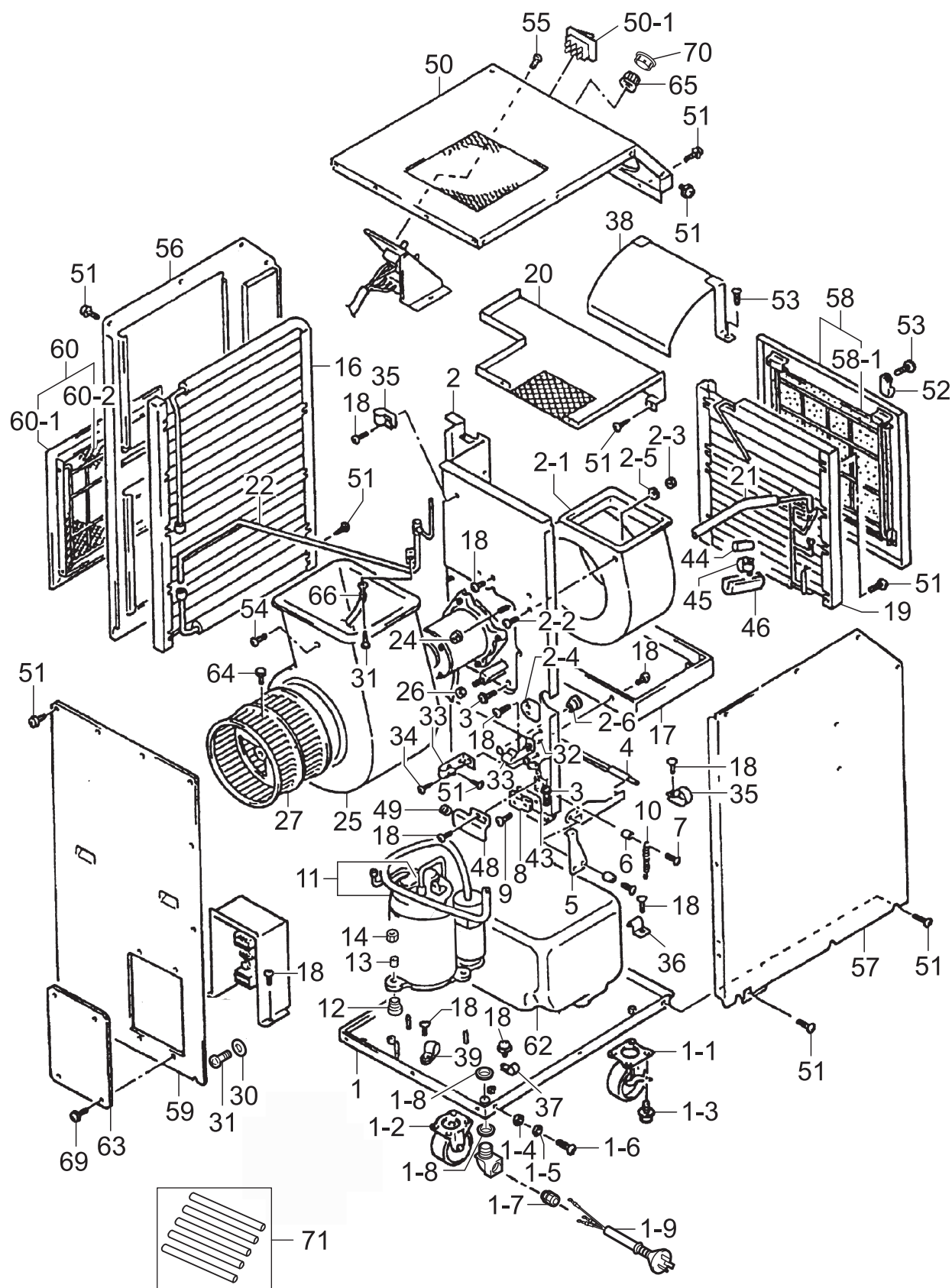
ILL. NO.	DESCRIPTION	PART NO.	QTY.	PRODUC-TION PERIOD (mm/yy)	REMARKS
	Unit Assy				
1	Frame Assy				No Supply
1-1	Roller	484702-0241	2		w/Lock
1-2	Roller	484702-0250	2		No Lock
1-3	Bolt, w/Washer	91510-08141	8		M8, L14
1-4	Washer, Toothed	949016-0120	1		ID6.4
1-5	Washer, Plate	90201-06400	1		For Ground
1-6	Screw, Crossrecess Pan	90051-06120	1		M6, L12 For Ground
1-7	Grommet	484926-0720	1		
1-8	Nut, Holder	484919-0110	2		
1-9	Wire Assy	481950-0280	1		Power Cord
2	Frame Assy				No Supply
2-1	Casing	484261-0010	1		
2-2	Screw, w/Washer	91370-06161	4		M6, L16
2-3	Nut, Hexagon	90160-06051	4		M6
2-4	Grommet	484926-0120	1		
2-5	Washer, Plate	90200-06711	4		T2.0
2-6	Grommet	949321-3000	1		
3	Screw, w/Washer	91370-06121	5		M6, L12
4	Frame Sub-Assy	484310-2910	1		
5	Bracket	484321-0510	1		
6	Socket	480837-0030	4		
7	Screw, Crossrecess Countersunk	91060-04161	4		M4, L16
8	Switch	484502-0230	1		
9	Screw, w/Washer	91310-03161	2		M3, L16
10	Spring, Tension Coil	484917-0680	2		
11	Compressor Assy	484650-1800	1		
12	Cushion	484904-0150	3		
13	Collar, Steel	949192-5550	3		
14	Nut	949056-2500	3		M8
16	Core Assy	484600-1510	1		Condenser
17	Pan Assy, Drain	484430-0120	1		
18	Screw	949006-5850	24		M4, L10
19	Core Assy	484600-0300	1		Evaporator
20	Stay Sub-Assy	484340-2101	1		
21	Pipe Assy	484800-2160	1		
22	Pipe Assy	484800-0910	1		
24	Nut, Flange	92150-06061	2		M6
25	Casing	484261-0070	1		
26	Nut	949056-1430	2		M6
27	Fan	484221-0350	1		
30	Plate	484311-1710	1		
31	Screw, Crossrecess Pan	91051-04100	3		M4, L10

**15SF**



ILL. NO.	DESCRIPTION	PART NO.	QTY.	PRODUC-TION PERIOD (mm/yy)	REMARKS
32	Clamp	481902-0020	1		
33	Holder	484927-0151	2		
34	Screw	949006-6140	1		M4, L16
35	Clamp	473459-0370	3		
36	Holder	484927-0970	1		
37	Clamp	481902-0030	1		
38	Stay Sub-Assy	484340-0920	1		
39	Clip, Cord	949350-3030	1		D15.2
43	Plate	484311-0870	1		
44	Plate	484311-1320	1	-07/'10	
		484311-3580	1	08/'10-	
45	Holder	484927-0660	1	-07/'10	
			2	08/'10-	
46	Packing	484901-4700	1		
48	Cover	484391-0560	1		
49	Grommet	949321-3000	1		
50	Panel Assy	484410-8690	1		w/ILL.50-1
50-1	Switch	484502-0290	1		
51	Screw, Tapping	949001-1570	46		D4, L10
52	Clip, Cord	472818-0030	2		
53	Screw, w/Washer	91370-04101	2		M4, L10
54	Screw, w/Washer	949007-3600	2		M4, L14
55	Screw, Crossrecess Countersunk	91060-04101	2		M4, L10
56	Panel Assy	484410-6160	1		
57	Panel Assy	484410-8700	1		
58	Panel Assy	484410-1400	1		w/ILL.58-1
58-1	Filter	484401-0661	1		
59	Panel	484411-4070	1		
60	Filter Assy	484400-0060	2		w/ILL.60-1~60-2
60-1	Frame Assy	484300-0260	2		
60-2	Filter	484401-0661	2		
62	Tank	484731-0220	1		
63	Panel Sub-Assy	484470-4240	1	-07/'10	
		484470-4810	1	08/'10-	
64	Bolt, Hexagon	949040-6150	1		M8, L18.5
65	Knob	484923-0060	1	-07/'10	
		484923-0310	1	08/'10-	
66	Wire Assy	484930-0911	1		For Ground
67	Clamp	146690-1920	2		
68	Clamp	481902-0080	1		
69	Screw, w/Washer	480919-0370	4		
70	Cover	484391-2720	1		

15SF



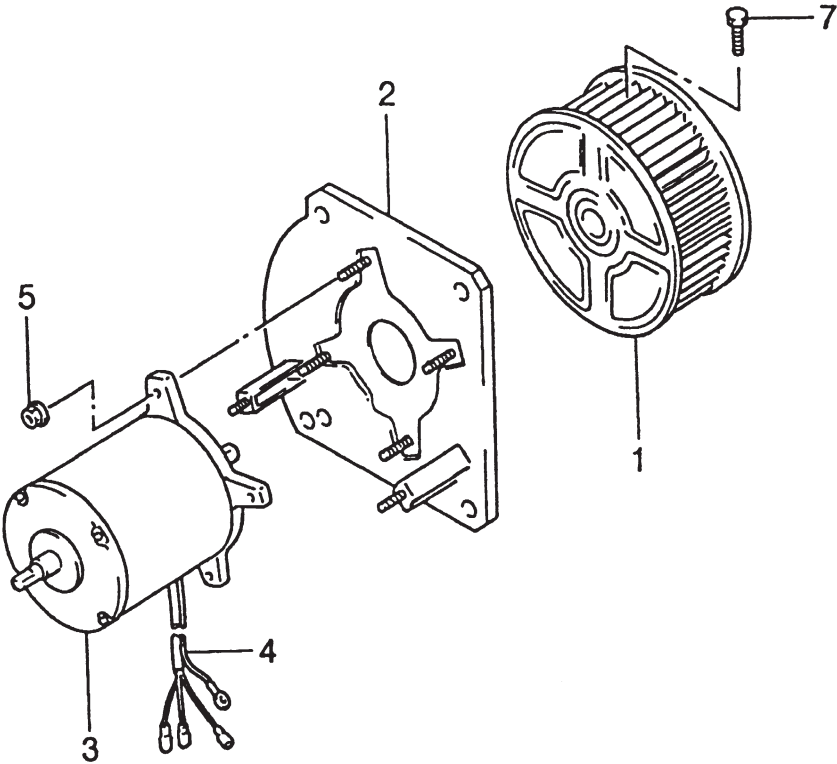
ILL00415-01

Production Period from August 2007 (0807) to October 2013 (1013)

**15SF**

ILL. NO.	DESCRIPTION	PART NO.	QTY.	PRODUC- TION PERIOD (mm/yy)	REMARKS
71	Pipe Assy	484800-0440	1		For Charging, 5 Pieces Per Package

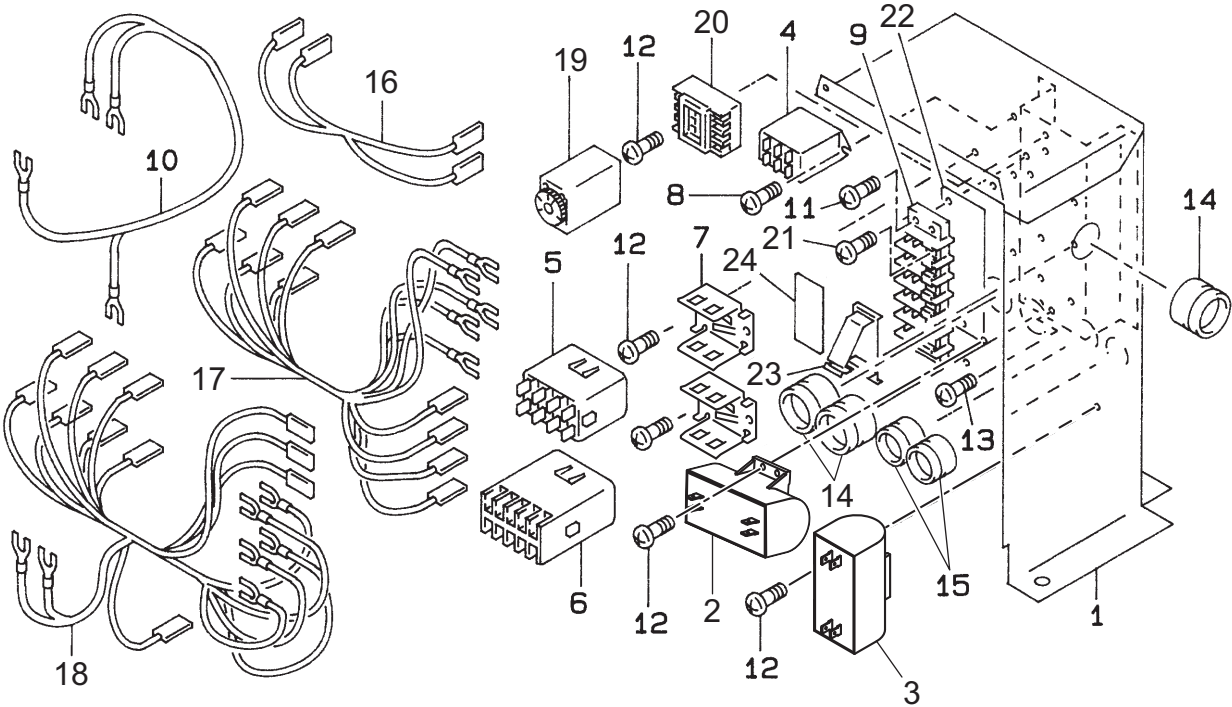
15SF





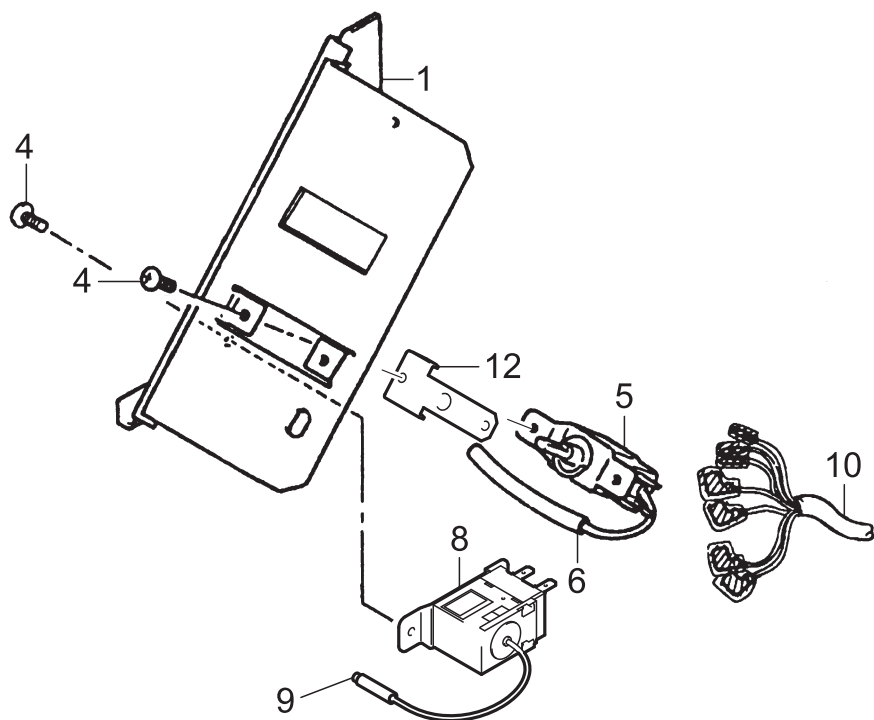
ILL. NO.	DESCRIPTION	PART NO.	QTY.	PRODUC- TION PERIOD (mm/yy)	REMARKS
	Blower Assy				
1	Fan	484221-0290	1		
2	Stay Assy	484330-0341	1		
3	Motor	484211-1321	1		
4	Wire Assy	484930-0901	1		
5	Nut, Flange	92150-06061	4		M6
7	Bolt, Hexagon	949040-6150	1		M8, L18.5

15SF



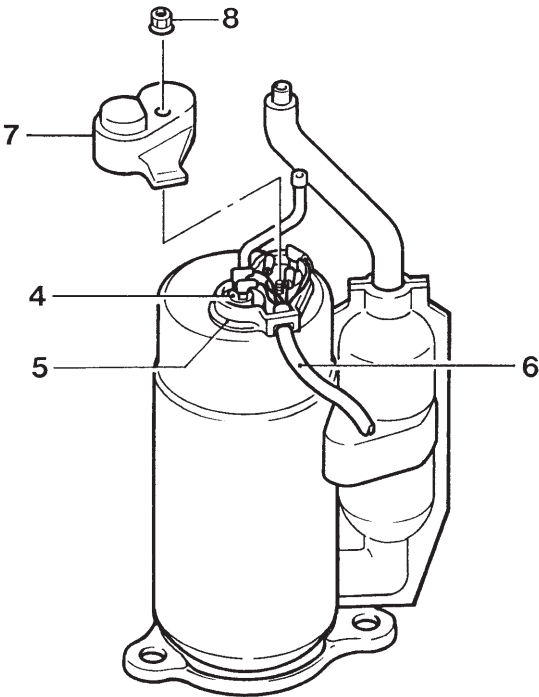
ILL. NO.	DESCRIPTION	PART NO.	QTY.	PRODUC-TION PERIOD (mm/yy)	REMARKS
1	Controller Assy Box Sub-Assy	484520-0672 484520-1331	1 1	-07/'12 08/'12-	
2	Capacitor, Compressor	484507-2140	1		25μF, 400VAC
3	Capacitor, Fan	484550-0050	1	-07/'12	10μF, 400VAC
		484507-2150	1	08/'12-	w/Bracket & Screws 10μF, 400VAC No Bracket & Screws
4	Relay	484531-0170	1		RRX
5	Relay	484531-0780	1	-12/'12	MCC
		484531-1000	1	01/'13-	MCC
6	Relay	484531-0820	1	-12/'12	RX
		484531-0990	1	01/'13-	RX
7	Holder	484927-1290	2		
8	Screw, Flange	92100-03081	2		M3, L8
9	Terminal	484503-0250	1		
10	Wire Assy	484930-9390	1		
11	Screw	949006-3280	2		M4, L18
12	Screw	949006-3250	10		M4, L10
13	Screw, Crossrecess Pan	91051-04100	1		M4, L10
14	Grommet	949321-3010	3		
15	Grommet	949321-3000	2		
16	Wire Assy	484930-2980	1	-12/'12	
		481950-1970	1	01/'13-	
17	Wire Assy	484930-9400	1	-01/'12	
		481950-1760	1	02/'12-12/'12	
		481950-2130	1	01/'13-	
18	Wire Assy	484930-9410	1	-01/'12	
		481950-1770	1	02/'12-12/'12	
		481950-2140	1	01/'13-	
19	Relay	484531-0251	1		CTD
20	Terminal	484503-0170	1	-01/'12	
		484503-1290	1	02/'12-	
21	Bolt	480919-0190	2		M3.5, L8
22	Plate	484311-1700	1		
23	Holder	484927-0840	1		
24	Packing	484901-8170	1		

15SF



ILL. NO.	DESCRIPTION	PART NO.	QTY.	PRODUC- TION PERIOD (mm/yy)	REMARKS
	Switch Assy				
1	Cover Sub-Assy	484390-0721	1		
4	Screw, Crossrecess Pan	91050-04061	4		M4, L6
5	Thermostat	484504-0030	1	-07/'10	For Room
		484504-0340	1	08/'10-	For Room
6	Tube, Vinyl	7151-253308	1	-07/'10	L330
		7151-355508	1	08/'10-	L550
8	Thermostat	484504-0260	1	-07/'10	For Antifreezing
		484504-0330	1	08/'10-	For Antifreezing
9	Cap	484922-0080	1		
10	Wire Assy	484930-9381	1	-07/'10	
		481950-1080	1	08/'10-12/'12	
		481950-2010	1	01/'13-	
12	Bracket	484321-3870	1	08/'10-	

15SF



ILL. NO.	DESCRIPTION	PART NO.	QTY.	PRODUC- TION PERIOD (mm/yy)	REMARKS
	Compressor Assy	484650-1610	1		
4	Relay, Overload	484501-0330	1		
5	Plate, Rubber	484903-0330	1		
6	Wire Assy	484930-6070	1		
7	Cover	484391-1090	1		
8	Nut	949056-1520	1		M5

[ Memo ]



No.3

SP0058-03

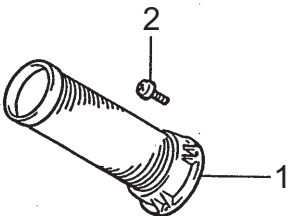
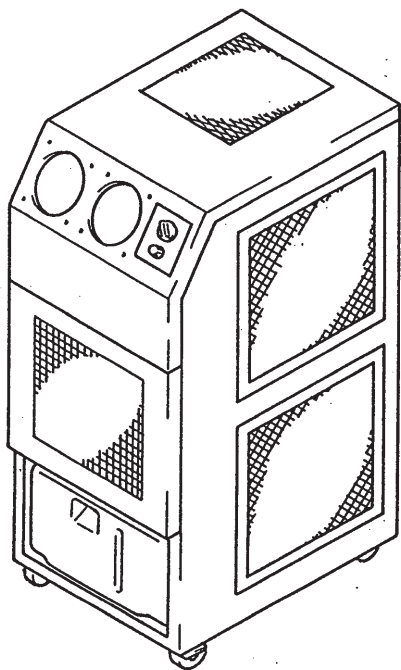
# 15SF

Unit Part No: 484000-0412

Production Period: From September 2005 (0905)  
To June 2007 (0607)

Serial No: 09G0012 ~ 06J0020

15SF

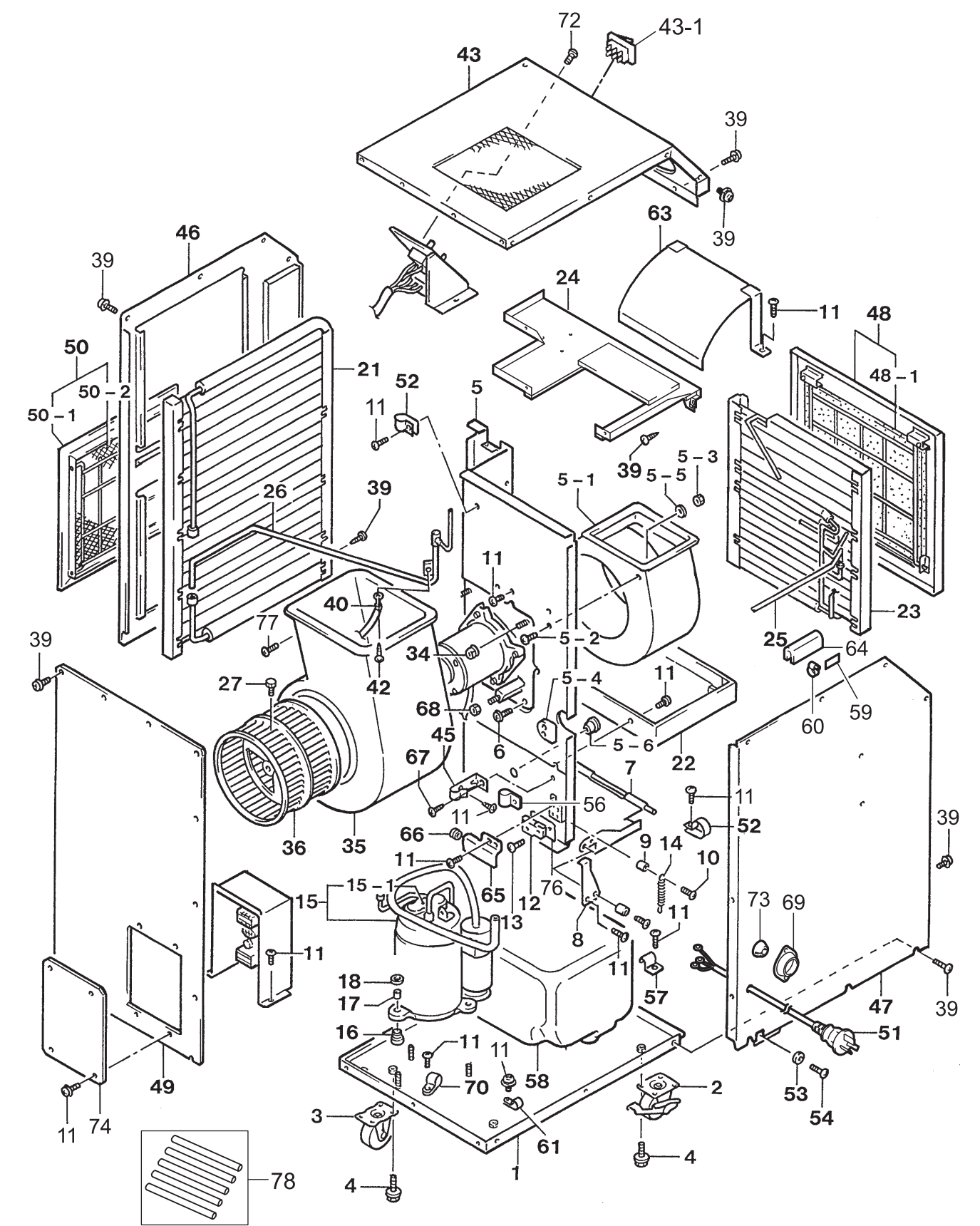


Production Period from September 2005 (0905) to June 2007 (0607)

**15SF**

ILL. NO.	DESCRIPTION	PART NO.	QTY.	PRODUC- TION PERIOD (mm/yy)	REMARKS
	Airconditioner Assy				
1	Duct Assy	484350-0111	2		
2	Screw, w/Washer	91370-06121	8		M6, L12

15SF



ILL00409-00

ILL. NO.	DESCRIPTION	PART NO.	QTY.	PRODUC-TION PERIOD (mm/yy)	REMARKS
	Unit Assy				
1	Frame Sub-Assy				No Supply
2	Roller	484702-0241	2		w/Lock
3	Roller	484702-0250	2		No Lock
4	Bolt, w/Washer	91510-08141	8		M8, L14
5	Frame Assy				No Supply
5-1	Casing	484261-0010	1		
5-2	Screw, w/Washer	91370-06161	4		M6, L16
5-3	Nut, Hexagon	90160-06051	4		M6, L5
5-4	Grommet	484926-0120	1		
5-5	Washer, Plate	90200-06711	4		T2.0
5-6	Grommet	949321-3000	1		
6	Screw, w/Washer	91370-06121	5		M6, L12
7	Frame Sub-Assy	484310-2910	1		
8	Bracket	484321-0510	1		
9	Socket	480837-0030	4		
10	Screw, Crossrecess Countersunk	91060-04161	4		M4, L16
11	Screw	949006-5850	30		M4, L10
12	Switch	484502-0230	1		
13	Screw, w/Washer	91310-03161	2		M3, L16
14	Spring, Tension Coil	484917-0680	2		
15	Compressor Assy	484650-2440	1		w/ILL.15-1
15-1	Cover	484391-1090	1		
16	Cushion	484904-0150	3		
17	Collar, Steel	949192-5550	3		ID10.2
18	Nut, Special	482814-0300	3		
21	Core Assy	484600-0400	1		Condenser
22	Pan Assy, Drain	484430-0120	1		
23	Core Assy	484600-0300	1		Evaporator
24	Stay Sub-Assy	484340-2101	1		
25	Pipe Assy	484800-2160	1		
26	Pipe Assy	484800-0910	1		
27	Bolt, Hexagon	949040-6150	1		M8, L18.5
34	Nut, Flange	92150-06061	2		M6
35	Casing	484261-0070	1		
36	Fan	484221-0350	1		
39	Screw, Tapping	949001-1570	46		D4, L10
40	Wire Assy	484930-0911	1		For Ground
42	Screw, Crossrecess Pan	91051-04100	3		M4, L10
43	Panel Assy	484410-5200	1		w/ILL.43-1
43-1	Switch	484502-0290	1		
45	Holder	484927-0151	2		
46	Panel Assy	484410-3941	1		

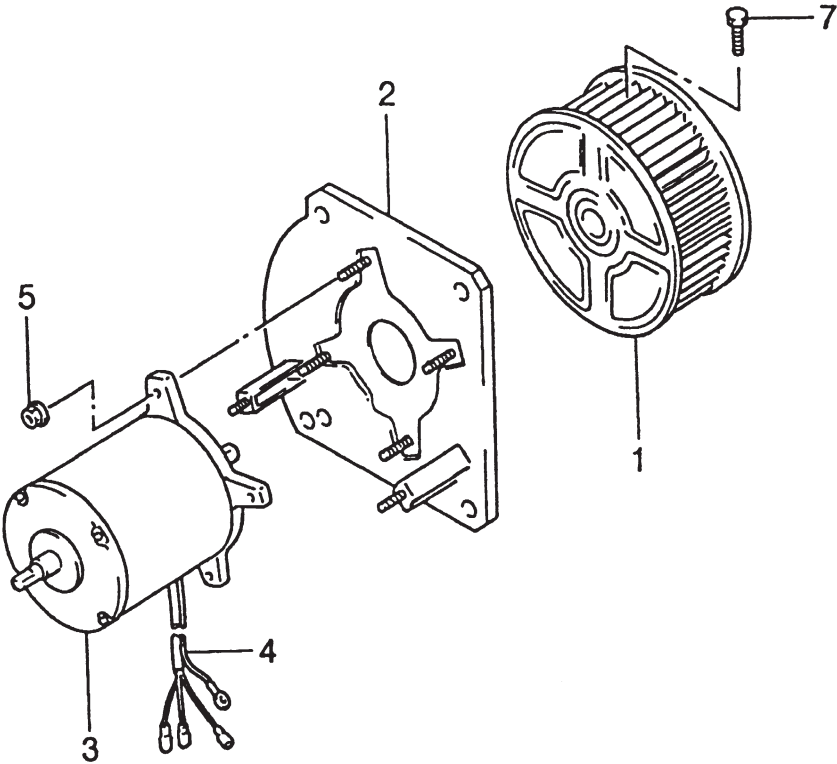
**15SF**



ILL. NO.	DESCRIPTION	PART NO.	QTY.	PRODUCTION PERIOD (mm/yy)	REMARKS
47	Panel Assy	484410-5210	1		
48	Panel Assy	484410-1400	1		w/ILL.48-1
48-1	Filter	484401-0661	1		
49	Panel	484411-2510	1		
50	Filter Assy	484400-0060	2		w/ILL.50-1~50-2
50-1	Frame Assy	484300-0260	2		
50-2	Filter	484401-0661	2		
51	Wire Assy	484930-0892	1		Power Cord
52	Clamp	473459-0370	3		
53	Washer, Plate	90201-06400	1		For Ground
54	Screw, Crossrecess Pan	90051-06120	1		M6, L12 For Ground
56	Clamp	481902-0020	1		
57	Holder	484927-0970	1		
58	Tank	484731-0220	1		
59	Plate	484311-1320	1		
60	Holder	484927-0660	1		
61	Clamp	481902-0030	1		
63	Stay Sub-Assy	484340-0920	1		
64	Packing	484901-4700	1		
65	Cover	484391-0560	1		
66	Grommet	949321-3000	1		
67	Screw	949006-6140	1		M4, L16
68	Nut	949056-1430	2		M6
69	Clip	484917-0012	1		
70	Clip, Cord	949350-3030	1		D15.2
72	Screw, Crossrecess Countersunk	91060-04101	2		M4, L10
73	Grommet	484926-0110	1		
74	Panel Sub-Assy	484470-2590	1		
76	Plate	484311-0870	1		
77	Screw, w/Washer	949007-3600	2		M4, L14
78	Pipe Assy	484800-0440	1		For Charging, 5 Pieces Per Package

Production Period from September 2005 (0905) to June 2007 (0607)

15SF

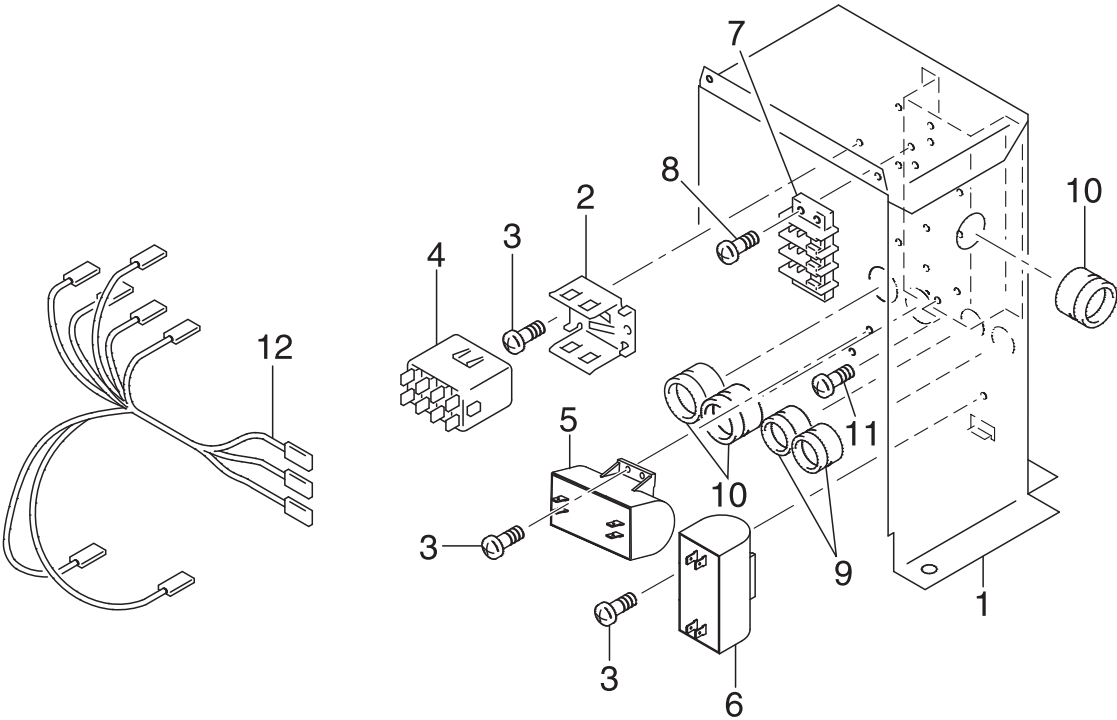


ILL00197-00



ILL. NO.	DESCRIPTION	PART NO.	QTY.	PRODUC- TION PERIOD (mm/yy)	REMARKS
	Blower Assy				
1	Fan	484221-0290	1		
2	Stay Assy	484330-0341	1		
3	Motor	484211-1311	1		
4	Wire Assy	484930-0901	1		
5	Nut, Flange	92150-06061	4		M6
7	Bolt, Hexagon	949040-6150	1		M8, L18.5

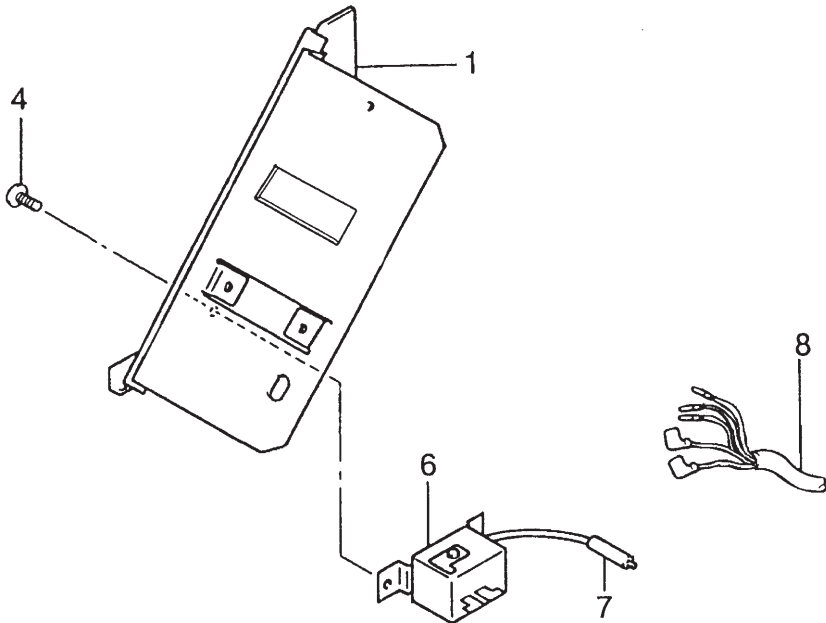
15SF



ILL. NO.	DESCRIPTION	PART NO.	QTY.	PRODUC- TION PERIOD (mm/yy)	REMARKS
	Controller Assy				
1	Box Sub-Assy	484520-0672	1		
2	Holder	484927-1290	1		
3	Screw	949006-3250	5		M4, L10
4	Relay	484531-0150	1		
5	Capacitor, Compressor	484507-2140	1		25μF, 400VAC
6	Capacitor, Fan	484550-0050	1		10μF, 400VAC w/Bracket & Screws
7	Terminal	484503-0430	1		
8	Screw	949006-3280	2		M4, L18
9	Grommet	949321-3000	2		
10	Grommet	949321-3010	3		
11	Screw, Crossrecess Pan	91051-04100	1		M4, L10
12	Wire Assy	484930-4740	1		

Production Period from September 2005 (0905) to June 2007 (0607)

15SF



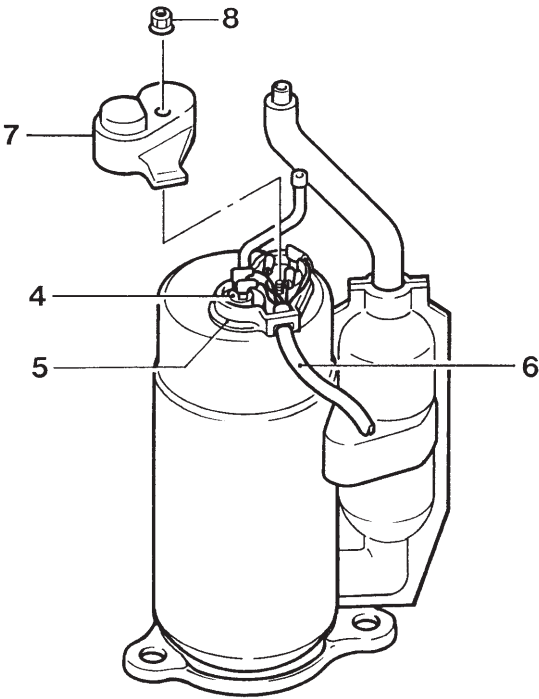
Production Period from September 2005 (0905) to June 2007 (0607)

**15SF**

ILL. NO.	DESCRIPTION	PART NO.	QTY.	PRODUC- TION PERIOD (mm/yy)	REMARKS
	Switch Assy				
1	Cover Sub-Assy	484390-0721	1		
4	Screw, Crossrecess Pan	91050-04061	2		M4, L6
6	Thermostat	484504-0260	1		For Antifreezing
7	Cap	484922-0080	1		
8	Wire Assy	484930-4732	1		

Production Period from September 2005 (0905) to June 2007 (0607)

15SF



ILL00204-00

ILL. NO.	DESCRIPTION	PART NO.	QTY.	PRODUC- TION PERIOD (mm/yy)	REMARKS
	Compressor Assy				
4	Relay, Overload	484501-0240	1		
5	Plate, Rubber	484903-0280	1		
6	Wire Assy	484930-8491	1		
7	Cover	484391-1090	1		
8	Nut	949056-1520	1		M5

***DENSO***

DENSO AUTOMOTIVE SYSTEMS AUSTRALIA PTY. LTD.

2-46 Merrindale Drive  
Croydon, Vic, 3136

Third Issue: February 2014