

**DENSO**



FOR PASSENGER & LIGHT COMMERCIAL VEHICLES

# Diesel Fuel Filters

**DIESEL FILTER CATALOGUE  
2020**



[www.DENSO.com.au](http://www.DENSO.com.au)



# Service Dealer Network



As the number of passenger vehicles with diesel engines continues to grow, innumerable drivers rely on the quality offered by genuine DENSO aftermarket parts and our invaluable authorised service dealer network.

Introduced over 30 years ago, this specialist network now boasts more than 100 workshop members in the Australia/Oceania region.

These certified repairers are factory trained and fully equipped with the latest tools to diagnose and repair diesel vehicles and use only genuine parts to ensure vehicle integrity, longevity, and stringent worldwide emission tests.

- ✓ 100% GENUINE PARTS
- ✓ EXTENSIVE SERVICE DEALER NETWORK
- ✓ FACTORY BACKED TRAINING
- ✓ AUTHORISED DIAGNOSTIC EQUIPMENT

Now with over 100 workshop members in the Australia/Oceania region.



# Contents

<b>BASIC FUNCTION</b>	<b>2</b>
<b>COMPARISON</b>	<b>3</b>
> FILTRATION EFFICIENCY (@5MM)	3
> FILTRATION LIFE /TRAPPING AMOUNT	3
> WATER SEPARATION EFFICIENCY	4
<b>APPLICATION - BY VEHICLE</b>	<b>8</b>
> FORD, ISUZU, MAZDA, MITSUBISHI	9
> TOYOTA	10
<b>APPLICATION - BY PART NUMBER</b>	<b>12</b>
> KS086300-2720	13
> KS086300-4040, KS086300-4080	14
> KS086300-4110	15
> KS186100-6450	16
<b>CROSS REFERENCE</b>	<b>18</b>

## Copyright Notice and Disclaimer

This catalogue has been published for its intended users.

The material contained in this catalogue is based on information available at the time of publication, and all data and information provided is for informational purpose only. DENSO has taken every precaution to ensure that information in this catalogue is accurate, valid and complete at time of publishing. DENSO will not be liable for any errors, omissions, or delays in this information.

All specifications may be subjected to change without prior notice.

DENSO and their logos are trademarks of DENSO Corporation.

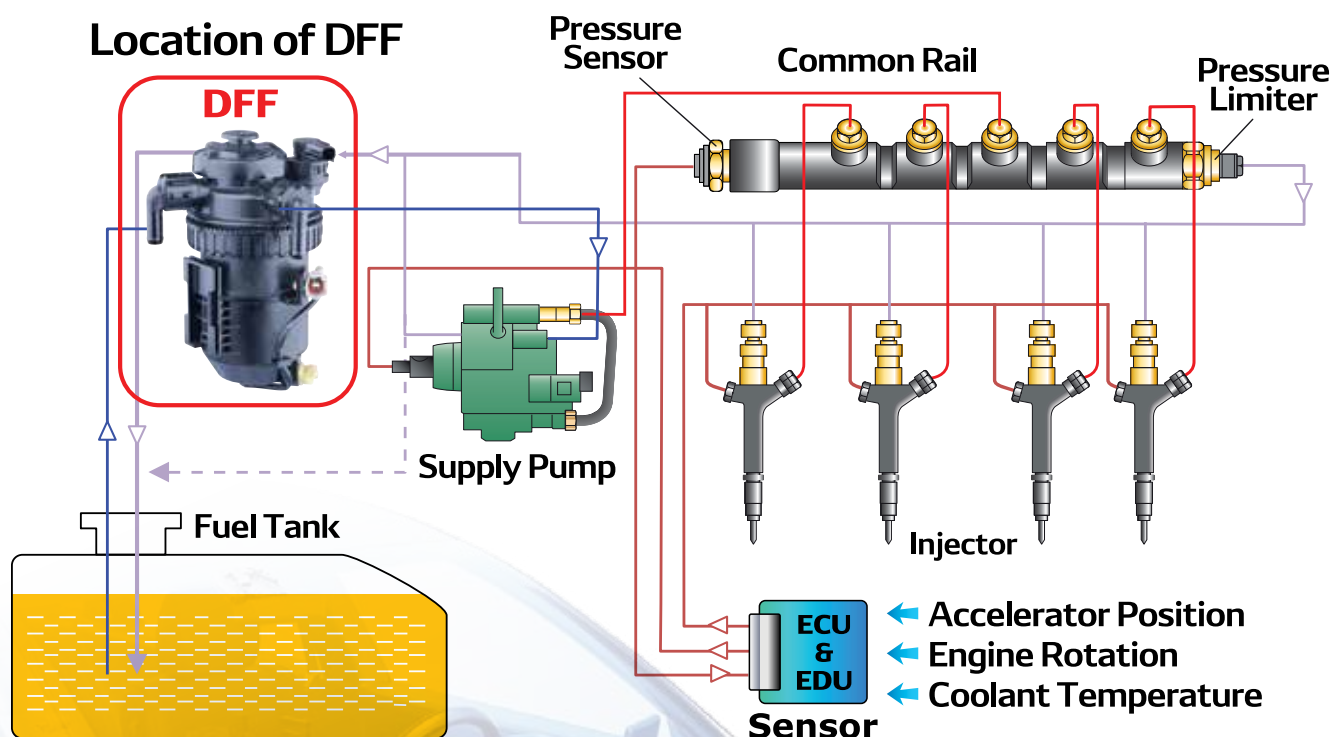
All information is correct at time of publishing.  
Copyrighted DENSO 2019

# Diesel Fuel Filter

Diesel Fuel Filter, or commonly known as OFF, filters dust and water from diesel fuel.

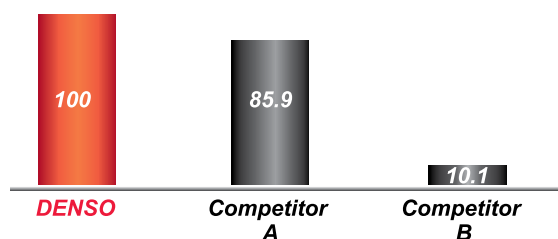
Diesel engine components like fuel pumps or injectors are getting more precise, especially for Common Rail System. These components are designed and manufactured within a couple of micrometers of tolerance to accurately work under extreme high pressure.

In such system, filtering dust and water in fuel is quite critical. Even small dust particles can lead to damage for these components. Cost to repair the system is very expensive due to the precise components.



# Filtration Efficiency (@5μm)

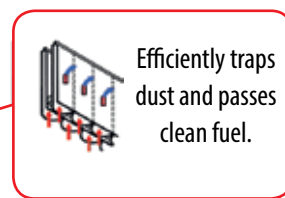
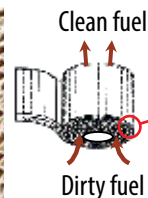
As seen in the graph below, at a filtration efficiency of 5μm, DENSO filters more than Competitors A and B. This means that you can be assured that even small particles of dust can be filtered by a DENSO DFF. This small difference has great effect in protecting your CRS components since these are made with tight tolerance of few μm.



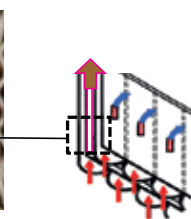
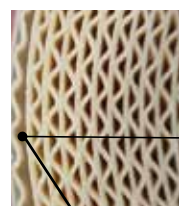
\*For reference, 5μm is 5% to 10% of hair diameter



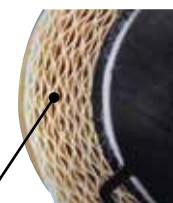
## DENSO Honeycomb



## Imitation Honeycomb



## Spiral Type

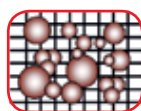


Not having proper adhesion causes dust to enter the CRS

The competitors Spiral Type of filter has 30% less surface area than a DENSO Honeycomb DFF.

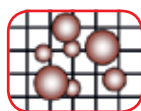
# Filtration Life /Trapping Amount

## DENSO Diesel Fuel Filters



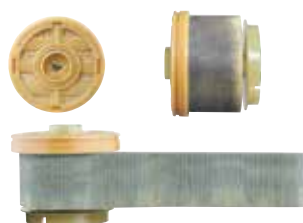
Traps large amounts of small dust particles.  
> More precise

## Imitation Aftermarket Diesel Fuel Filters

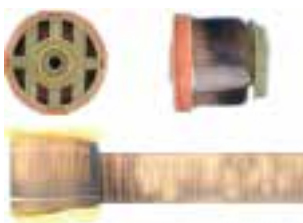


Only traps large dust particles.  
> Longer filtration life

## Comparison at 20,000km's



- > Consistent filtration
- > Traps large quantities of dust



- > Inconsistent filtration
- > Small dust particles reach the CRS

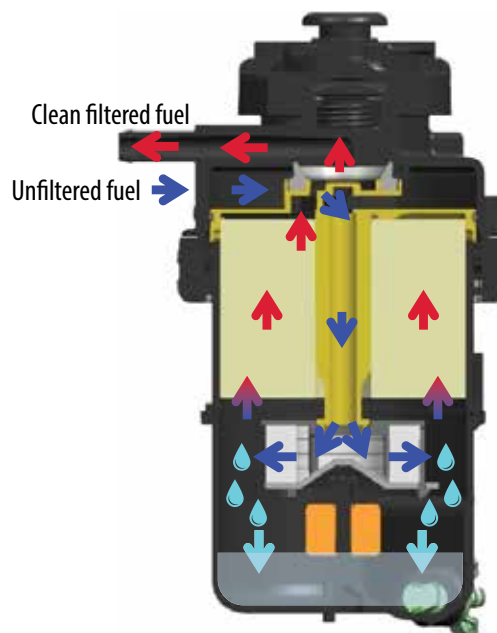
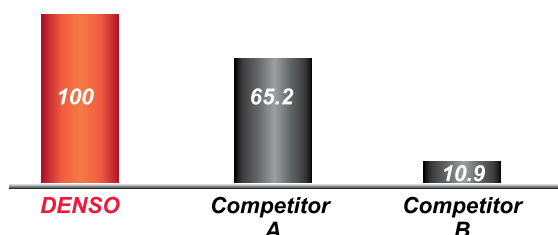
### Note:

Fuel Filter warning lights will notify drivers when the filter needs replacing.

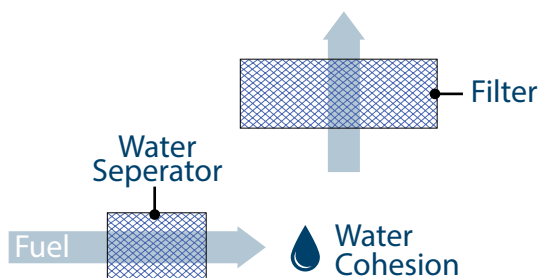


# Water Separation Efficiency

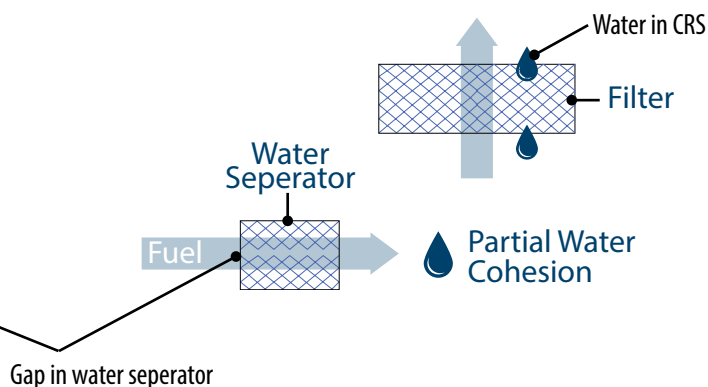
As seen in the graph below, water separation efficiency for DENSO is better than Competitors A and B. This means that with a DENSO DFF, there is less chance of water getting into your fuel tank, therefore this is lesser chance of supply pump defect due to rust.



## DENSO Diesel Fuel Filters



## Imitation Aftermarket Diesel Fuel Filters





# DIESEL FUEL FILTER APPLICATION

BY VEHICLE



MODEL	CHASSIS	ENGINE CODE	YEAR FROM	YEAR TO	LITRES	PART NUMBER
<b>FORD</b>						
EVEREST	UA		2015		3.2	KS086300-4080
RANGER	PX	GBVAJQJ	2011		2.2	KS086300-4080
	PX	P5-AT, SAFA	2011		3.2	KS086300-4080
	PX	SAFA	2011		3.2	KS086300-4080
	PX	P5-AT	2011		3.2	KS086300-4080
	PX		2015		2.2	KS086300-4080
<b>ISUZU</b>						
D-MAX	TFR, TFS	4JJ1-TCX, 4JJ1-TC	2012		3.0	KS086300-2720
	TFR, TFS	4JJ1-TC	2012		3.0	KS086300-2720
	TFR, TFS	4JJ1-TC, 4JJ1-TCX	2012		3.0	KS086300-2720
MU-X	LS	4JJ1-TCX, 4JJ1-TC	2013		3.0	KS086300-2720
<b>MAZDA</b>						
BT-50	B22, B32, UP, UR	P4-AT	2011		2.2	KS086300-4080
	B22, B32, UP, UR	P5-AT	2011		3.2	KS086300-4080
<b>MITSUBISHI</b>						
CHALLENGER	PA	4M41	1998	2008	3.2	KS086300-2720
	PB, PC	4D56 HP	2008		2.5	KS086300-2720 KS086300-4110
PAJERO	NM, NP	4D56 T	2000	2006	2.5	KS086300-2720 KS086300-4110
	NS, NT, NW	4M41	2006	2009	3.2	KS086300-2720 KS086300-4110
	NS, NT, NW, NX	4M41	2009		3.2	KS086300-2720 KS086300-4110
	NS, NT, NW	4M41	2016		3.2	KS086300-2720 KS086300-4110
PAJERO SPORT	QE	4N15	2015		2.4	KS086300-2720 KS086300-4110
TRITON	ML, MN	4D56 HP	2005	2015	2.5	KS086300-2720 KS086300-4110
	ML, MN	4M41	2006	2009	3.2	KS086300-2720
	ML, MN	4D56 HP, 4D56 (16V)	2008	2015	2.5	KS086300-2720 KS086300-4110
	ML, MN	4D56 HP	2009	2015	2.5	KS086300-2720 KS086300-4110
	MQ	4N15	2015		2.4	KS086300-2720 KS086300-4110
	MG	4N15	2015		2.4	KS086300-2720 KS086300-4110

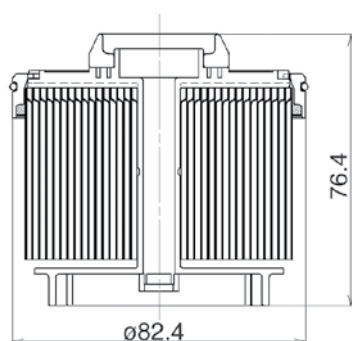


MODEL	CHASSIS	ENGINE CODE	YEAR FROM	YEAR TO	LITRES	PART NUMBER
<b>TOYOTA</b>						
4 RUNNER	LN6_, LN13_	3L	1988	1996	2.8	KS186100-6450
FORTUNER	GUN15_	1GD-FTV	2015		2.8	KS086300-4040
HIACE	LH10, LN11	3L	1989	2000	2.8	KS186100-6450
	LH16_, LH17_	5L	1997	2005	3.0	KS186100-6450
	KDH20_, KDH22_	2KD-FTV	2005		2.5	KS086300-2720
	KDH20_, KDH22_	1KD-FTV	2005		3.0	KS086300-2720
HILUX	LN8_, LN10_, LN11_	3L	1988	1997	2.8	KS186100-6450
	LN147	5L	1997	2000	3.0	KS186100-6450
	LN14_, LH16_, LH17_	5L-E	1997	2005	3.0	KS186100-6450
	KZN16_	1KZ-TE	1999	2005	3.0	KS186100-6450
	KUN1_, KUN2_	1KD-FTV	2005		3.0	KS086300-2720
	GUN12_, GUN13_	2GD-FTV	2015		2.4	KS086300-4040
	GUN12_, GUN13_	1GD-FTV	2015		2.8	KS086300-4040
LAND CRUISER	HZJ7_	1H-Z	1990	2007	4.2	KS186100-6450
	HZJ10_	1H-Z	1998	2007	4.2	KS186100-6450
	HDJ10_	1HD-FTE	2000	2007	4.2	KS186100-6450

# DIESEL FUEL FILTER APPLICATION

BY PART NUMBER


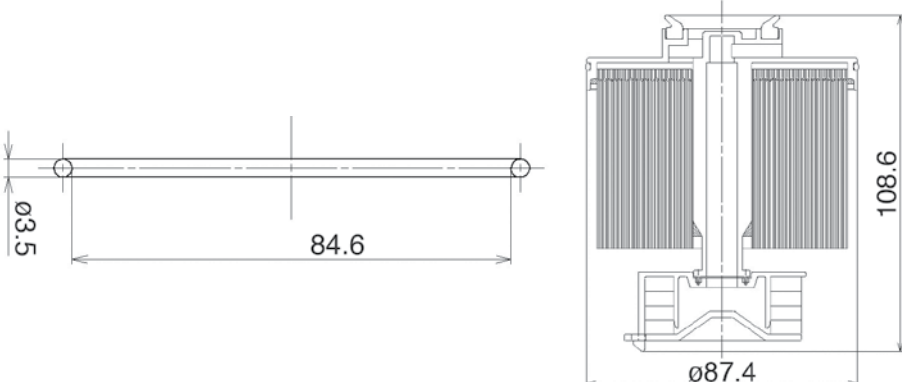


**DENSO  
PART NUMBER**
**VEHICLE MAKE**
**VEHICLE MODEL**
**CHASSIS**
**ENGINE CODE**
**YEAR**
**LITRES**
**KS086300-2720**



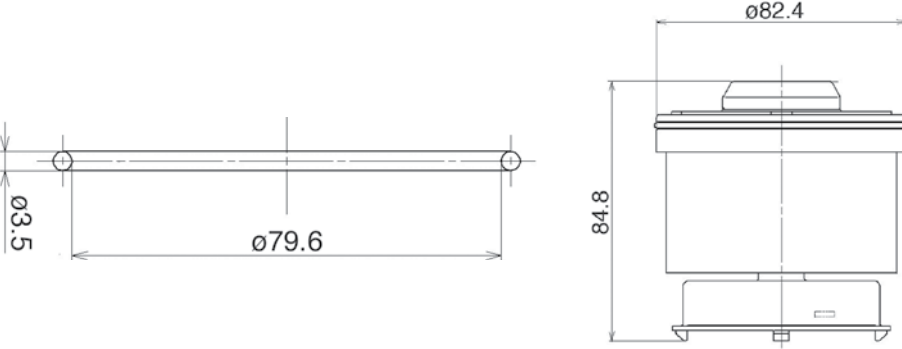
ISUZU	D-MAX	TFR, TFS	4JJ1-TCX, 4JJ1-TC	2012	3.0
ISUZU	D-MAX	TFR, TFS	4JJ1-TC	2012	3.0
ISUZU	D-MAX	TFR, TFS	4JJ1-TC, 4JJ1-TCX	2012	3.0
ISUZU	MU-X	LS	4JJ1-TCX, 4JJ1-TC	2013	3.0
MITSUBISHI	CHALLENGER	PA	4M41	1998-2008	3.2
MITSUBISHI	CHALLENGER	PB, PC	4D56 HP	2008	2.5
MITSUBISHI	PAJERO	NM, NP	4D56 T	2000-2006	2.5
MITSUBISHI	PAJERO	NS, NT, NW	4M41	2006-2009	3.2
MITSUBISHI	PAJERO	NS, NT, NW, NX	4M41	2009	3.2
MITSUBISHI	PAJERO	NS, NT, NW	4M41	2016	3.2
MITSUBISHI	PAJERO SPORT	QE	4N15	2015	2.4
MITSUBISHI	TRITON	ML, MN	4D56 HP	2005-2015	2.5
MITSUBISHI	TRITON	ML, MN	4M41	2006-2009	3.2
MITSUBISHI	TRITON	ML, MN	4D56 HP, 4D56 (16V)	2008-2015	2.5
MITSUBISHI	TRITON	ML, MN	4D56 HP	2009-2015	2.5
MITSUBISHI	TRITON	MQ	4N15	2015	2.4
MITSUBISHI	TRITON	MG	4N15	2015	2.4
TOYOTA	HIACE	KDH20_, KDH22_	2KD-FTV	2005	2.5
TOYOTA	HIACE	KDH20_, KDH22_	1KD-FTV	2005	3.0
TOYOTA	HILUX	KUN1_, KUN2_	1KD-FTV	2005	3.0


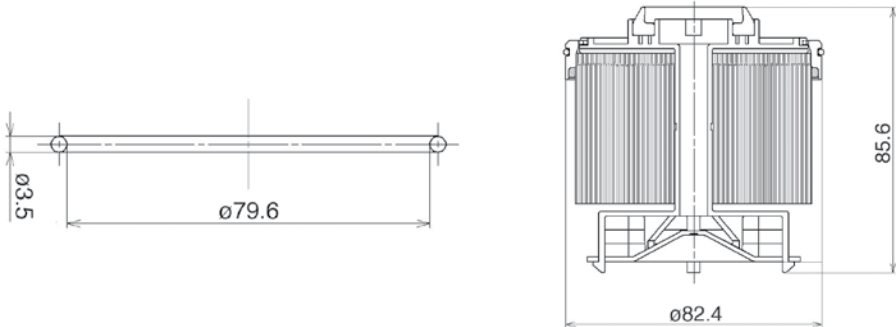


DENSO PART NUMBER	VEHICLE MAKE	VEHICLE MODEL	CHASSIS	ENGINE CODE	YEAR	LITRES
<b>KS086300-4040</b>	TOYOTA	FORTUNER	GUN15_	1GD-FTV	2015	2.8
	TOYOTA	HILUX	GUN12_ GUN13_	2GD-FTV	2015	2.4
	TOYOTA	HILUX	GUN12_ GUN13_	1GD-FTV	2015	2.8

<b>KS086300-4080</b>	FORD	EVEREST	UA		2015	3.2
	FORD	RANGER	PX	GBVAJQJ	2011	2.2
	FORD	RANGER	PX	P5-AT, SAFA	2011	3.2
	FORD	RANGER	PX	SAFA	2011	3.2
	FORD	RANGER	PX	P5-AT	2011	3.2
	FORD	RANGER	PX		2015	2.2
	MAZDA	BT-50	B22, B32, UP, UR	P4-AT	2011	2.2
	MAZDA	BT-50	B22, B32, UP, UR	P5-AT	2011	3.2

DENSO PART NUMBER	VEHICLE MAKE	VEHICLE MODEL	CHASSIS	ENGINE CODE	YEAR	LITRES
<b>KS086300-4110</b>  	MITSUBISHI	CHALLENGER	PB, PC	4D56 HP	2008	2.5
	MITSUBISHI	PAJERO	NM, NP	4D56 T	2000-2006	2.5
	MITSUBISHI	PAJERO	NS, NT, NW	4M41	2006-2009	3.2
	MITSUBISHI	PAJERO	NS, NT, NW, NX	4M41	2009	3.2
	MITSUBISHI	PAJERO	NS, NT, NW	4M41	2016	3.2
	MITSUBISHI	PAJERO SPORT	QE	4N15	2015	2.4
	MITSUBISHI	TRITON	ML, MN	4D56 HP	2005-2015	2.5
	MITSUBISHI	TRITON	ML, MN	4D56 HP, 4D56 (16V)	2008-2015	2.5
	MITSUBISHI	TRITON	ML, MN	4D56 HP	2009-2015	2.5
	MITSUBISHI	TRITON	MQ	4N15	2015	2.4
	MITSUBISHI	TRITON	MG	4N15	2015	2.4
<div>  </div>						

DENSO PART NUMBER	VEHICLE MAKE	VEHICLE MODEL	CHASSIS	ENGINE CODE	YEAR	LITRES
<b>KS186100-6450</b>  	TOYOTA	4 RUNNER	LN6_, LN13_	3L	1988-1996	2.8
	TOYOTA	HIACE	LH10, LN11	3L	1989-2000	2.8
	TOYOTA	HIACE	LH16_, LH17_	5L	1997-2005	3.0
	TOYOTA	HILUX	LN8_, LN10_, LN11_	3L	1988-1997	2.8
	TOYOTA	HILUX	LN147	5L	1997-2000	3.0
	TOYOTA	HILUX	LN14_, LH16_, LH17_	5L-E	1997-2005	3.0
	TOYOTA	HILUX	KZN16_	1KZ-TE	1999-2005	3.0
	TOYOTA	LAND CRUISER	HZJ7_	1H-Z	1990-2007	4.2
	TOYOTA	LAND CRUISER	HDJ10_	1H-Z	1998-2007	4.2
	TOYOTA	LAND CRUISER	HDJ10_	1HD-FTE	2000-2007	4.2



# DIESEL FUEL FILTER CROSS REFERENCE

VEHICLE MAKE	VEHICLE MAKE PART NUMBER	DENSO PART NUMBER	REFERENCE PAGE NUMBER
FORD	AB39-9176-AC	KS086300-4080	Pg. 12
ISUZU	8-98159-693-0	KS086300-2720	Pg. 11
MAZDA	U2Y0-13-ZA5	KS086300-4080	Pg. 12
MITSUBISHI	1770A337	KS086300-4110	Pg. 13
TOYOTA	23390-0L010	KS086300-2720	Pg. 11
TOYOTA	23390-0L041	KS086300-2720	Pg. 11







**DENSO**



**DENSO AUTOMOTIVE SYSTEMS AUSTRALIA PTY.LTD**

46 Merrindale Drive, Croydon, 3136, Victoria

Email: [ap\\_dnau\\_info.denso@ap.denso.com](mailto:ap_dnau_info.denso@ap.denso.com)

Web: [www.denso.com.au](http://www.denso.com.au)

Phone: 03 8761 1449